

WISCONSIN HISTORICAL MARKERS

One Wisconsinite's journey to digitally record the history of Wonderful Wisconsin.

Home

Markers by County

Numerical List of Wisconsin Historical Society "Official" Markers

Wisconsin Registered Landmarks

National Historic Landmarks

National Natural Landmarks

Wisconsin Heritage Sign Program

Wisconsin's Whimsical Roadside Attractions

Lighthouses

Veterans Memorials

My Articles

My story

E-mail me

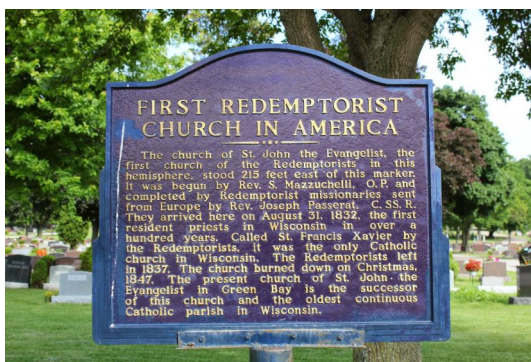
© Copyright notice



Follow @WIHistory



First Redemptorist Church in America



Photographed May 20, 2013

Erected August 31, 1982 by The Redemptorist Fathers of the Redemptorist Order of America
Allouez, Brown County, Wisconsin
44° 29.041' N, 88° 1.781' W

[Google Map](#)

FIRST REDEMPTORIST CHURCH IN AMERICA

The church of St. John the Evangelist, the first church of the Redemptorists in this hemisphere, stood 215 feet east of this marker. It was begun by Rev. S. Mazzuchelli, O. P. and completed by Redemptorist missionaries sent from Europe by Rev. Joseph Passerat, C. SS. R. They arrived here on August 31, 1832, the first resident priests in Wisconsin in over a hundred years. Called St. Francis Xavier by the Redemptorists, it was the only Catholic church in Wisconsin. The Redemptorists left in 1837. The church burned down on Christmas, 1847. The present church of St. John the Evangelist in Green Bay is the successor of this church and the oldest continuous Catholic parish in Wisconsin.

The marker is located at Allouez Catholic Cemetery on *northbound* Riverside Drive, north of its intersection with West Allouez Avenue, Allouez, Wisconsin 54301.

[St. John the Evangelist: Parish History](#)

[Wikipedia: Samuel Charles Mazzuchelli](#)

[The Apostle of the Upper Midwest: Samuel Mazzuchelli](#)

See also, [Marker 150: Father Samuel Mazzuchelli](#), a related marker in Lafayette County, Wisconsin.

See also, [St. John the Evangelist Congregation](#), a related marker at a nearby location.

M.A.Roberts Consulting



For assistance with Website Development, Social Media / Marketing, Grant Writing and Wordsmithing

In the News / On TV

07/29/2016: [Marking History: Wisconsin transplant brings state history to the digital age](#) (Door County Peninsula Pulse)

06/08/2016: [Wisconsin Historian Is On A Mission To See, Photograph State's Historical Markers, Sites](#) (Wisconsin Public Radio: Central Time Article)

06/08/2016: [Woman's Thousands Of Photos Document Wisconsin's History](#) (Wisconsin Public Radio: Central Time Radio Interview)

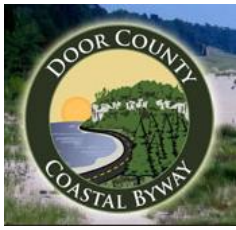
05/30/2016: [Woman's 50K photos document Wisconsin history](#) (Green Bay Press-Gazette)

06/20/2015: [Roberts travels Wisconsin from marker to marker](#) (Your Daily Globe)

05/30/2016: [Documenting Wisconsin Veterans Memorials](#) (Channel 5: We Are Green Bay)

05/27/2016: [A Patriotic Mission](#) (ABC 2 WBAY)

This website endorsed by:
Door County Coastal Byway



Comments from Visitors

Thank you so much for visiting, documenting, photographing and sharing our historic markers! This is truly an honor and it is much appreciated.
Jim Schuh
Chippewa County Historical Society

I just discovered your site and have been using it in my fourth grade summer school class in Viroqua, WI. We learned about Wisconsin throughout the year and are spending some time during summer school reading and talking about the history of Viroqua. We plan to take a walking trip to the Pioneer Cemetery and Lucy Stone marker. Thank you for all of your information!
Kimberly (Brye) Cade

Hi, I really love your historic marker site a lot. I write a travel blog and I get pictures of these markers to assist in my writing about each town. I went to the Dean House in January for their monthly tour. Here is a link.
[Jauriesportraits](#)

Very nice blog post. I certainly love this site. Keep it up!
Anonymous

Thank you for posting this! I am Russ & Grace's grand-daughter & very happy they helped preserve this little slice of Soo Line history for future generations! Awesome website. Thanks for your work!
Lillian Ferrall

Thanks for writing about your experiences! This is such a unique and wonderful way to share the history of our wonderful Wisconsin!
[tessaigynn](#)

© 2011-2017 Unless otherwise noted, content on this website is copyrighted. Click here for more information.

Popular Posts This Week



A portrait of 18-year-old Father Mazzuchelli, as he entered the Dominican Order.
This portrait is in the public domain.



Photographed August 31, 1982
The Redemptorists priests and novices at the marker dedication
Photo and permission for use generously and graciously provided by St. John the Evangelist Church.

ST. JOHN THE EVANGELIST CHURCH
FOOTPRINTS IN HISTORY
HISTORICAL MARKER – SHANTYTOWN

"On August 31, 1982 the Redemptorist Fathers dedicated an historical marker to St. John the Evangelist Church as the Redemptorist Order's first mission in America and the Western Hemisphere. It was placed at Allouez Catholic Cemetery – Shantytown, the site of the first St. John the Evangelist Church. They also celebrated the 150th Anniversary of the Redemptorist Order in America and the 250th Anniversary of their founding in Italy."¹

The first Redemptorists, Father Simon Saenderl C.Ss.R. and Brother Wenceslaus Witopil, arrived in Green Bay on August 31, 1832 after being assigned to accompany Father Mazzuchelli from Mackinac to St. John's by Bishop Fenwick of the Diocese of Cincinnati.² Father Francis X. Haetscher C.Ss.R. and Brother Joseph Reisch arrived later and helped in the completion of the church in 1833. In 1831 Father Samuel Mazzuchelli originally named

12/31/2015: Visiting Past Brings Woman peace in Present (Wisconsin Life)

12/31/2015: Historical Visitor (Wisconsin Public Television: Wisconsin Life)

03/27/2015: Facing cancer. De Pere woman visited every state historical marker (Journal Sentinel Wisconsin Trails)

Manitowoc County Historical Society Award Recipient



2014 Historic Preservation Award for Preservation Service

Website Sponsor



CardCow.com generously supports this website with vintage postcard screenshots of Wisconsin historical sites.

Wisconsin Historical Markers Collaboration



All Time Most Popular Posts

Marker 121: Du Bay Trading Post

WRL-54: Jacques Vieau Trading Post

WRL-74: St. Josaphat Basilica

Stevens Point Historic Mural "The Old Post Office"



WRL-54: Jacques Vieau Trading Post



Marker 121: Du Bay Trading Post



45x90 Geographical Marker



Numerical List of Wisconsin Historical Society "Official" Markers



Marker 328: Lapham Peak



Neenah Clocktower



Wisconsin's Whimsical Roadside Attractions



Oconomowoc



Miller Park Heroes



Oldest House in Winnebago County

the church after St. John the Evangelist but while the Redemptorists were there they dedicated the completed church to St. Francis Xavier, patron saint of missions.

On May 28, 1980 the Redemptorists returned to the site of their first mission, since Father Francis Haetscher left St. John's in 1837. "We arrived at Allouez Cemetery and went to see the Diocesan archivist, John Ebert, who gave us a copy of a surveyor's map showing the location of the foundation of the church. With map in hand, a 100 ft. tape measure, and assistance from Mr. Ebert, we measured the site of the first church." 3 Mr. Ebert also showed them the square nails, a church key, and other artifacts dug up at the site of the church. 4 On June 3rd, a photo was taken of thirteen Redemptorist priests, novices, and fraters outlining the perimeter of the church. 5

In September 1980, Father Joe Bilsley, C.Ss.R. and Father Joe Adamec, C.Ss.R. visited with Father Paul Demuth, Pastor of St. John's, and discussed the possibilities of an historical marker. 6 Father Adamec and Father Bilsley were responsible for the historical marker project and contacted the Diocese of Green Bay, the Redemptorist Provincial Rev. Edmund Langton, C.Ss.R., the Allouez Catholic Cemetery, and the Sewah Studios for approval. Father Langton replied, "Unless paying for the cost far exceeds our anticipation, the St. Louis Province would be able and willing to finance the project." The final cost of the marker was \$600.00. 8

"So one hundred and fifty years later, to the very day, the Redemptorists returned to Green Bay to honor this historical event." ... "That afternoon, we con-celebrated Mass, sang "Salve Regina", and blest the Shrine - size Icon of Perpetual Help, which was presented to St. John's to commemorate this day. St. John's was presented with a framed painting of Our Lady of Perpetual Help. After Mass there was a "cheese and wine time", followed by a dinner in the parish hall." 7

In leaving St. John's, the Redemptorists visited the Historical Plaque and again took a picture of the priests and novices next to the marker. 8

Sources:

- 1) Father Paul Demuth, Pastor of St. John the Evangelist Parish, 1975 - 1987.
- 2) Redemptorist Archives, Denver, Co.
- 3) "Redemptorist Roots Revisited" by Father Joseph Adamec C.Ss.R. and Father Joseph Bilsley C.Ss.R.
- 4) Catholic Twin Circle article, July 27, 1980.
- 5) Letter from Father Joseph Adamec C.Ss.R. to Father Edmund Langton C.Ss.R., September 7, 1980.
- 6) Redemptorist Archives, Denver, Co.
- 7) St. John the Evangelist Archives.
- 8) Photo provided by the Redemptorist Archives, Denver, Co.

© 1982 Thomas Schampers - St. John the Evangelist Archivist
Used with gracious and generous permission



Photographed August 31, 1982
The Redemptorists priests and novices form the outline of the First Redemptorist Church in America
Photo and permission for use generously and graciously provided by St. John the Evangelist Church.



The Meskwaki and Big Lake Butte Des Morts



Numerical List of Wisconsin Historical Society "Official" Markers



Maribel Caves Hotel



Bloecher-Johnson American Legion Post No. 502 Veterans Memorial



Little Red Inn



Marker 503: Brass Ball Corners

Flag Counter Installed
3/14/2014

Visitors

US 260,570	IR 34
CA 2,184	VE 34
GB 1,537	EG 33
JP 1,474	CL 32
DE 1,274	PR 32
RU 775	HR 31
FR 763	BG 27
IN 629	PE 25
AU 580	LV 24
BR 574	SA 24
NL 389	SK 22
KR 276	KZ 21
PH 273	EE 20
IT 242	BY 20
ES 218	EC 19
SE 210	KE 19
NO 202	DZ 18
DK 179	QA 17
MX 178	NG 17
BE 175	MA 16
PL 162	LB 15
IE 149	SI 15
CH 142	AL 14
FI 111	CR 14
UA 109	LT 14
NZ 96	LK 12
TH 83	JM 11
PK 83	TN 11
ZA 82	UY 11
ID 79	GE 10
TW 75	BA 9
AR 65	KW 8
IL 65	BS 8
CZ 65	HU 7
RO 63	PA 7
MY 62	GH 7
PT 62	NP 7
SG 61	GU 7
VN 61	MD 6
BD 60	ME 6
TR 59	TT 6
CN 57	IQ 6
HU 57	AF 6
GR 51	LA 6
AT 50	AZ 6
CO 47	IS 6
HK 44	CI 6
RS 40	PY 5
LU 40	MK 5
AE 39	KH 5

Pageviews: 585,942

FLAG counter

Edit Social Feed



Wisconsin Historical Markers
April 2, 2018



Super interesting!! I won't spoil the choice for Wisconsin by revealing it outright – hint, hint, she is one of only a pitifully small handful of women the Wisconsin Historical Society has deemed worthy of her very own "official" historical marker, located in her home town of [Waukesha](#) for my home



Wisconsin Historical Markers
April 2, 2018



If you don't already know about Marquette County's FABULOUS John Muir Nature and History Route, here's the perfect chance to check it out. Already been to several of the locations, but the website is missing on <https://www.fishio.com/website-tools/>



Wisconsin Historical Markers
April 2, 2018

Total Pageviews

1103396



The marker is placed alongside Riverside Drive.



Photographed December 2, 2014



The marker is next to one of many entrances to Allouez Cemetery. There is no street parking at the marker location; park in the cemetery road to access the marker (the marker is visible to the right of my vehicle, between the trees).



The marker is about a quarter-mile south of this sign, at the main entrance to Allouez Catholic Cemetery.



Labels: [Brown County 54301](#), [Brown County Wisconsin Historical Markers](#), [Catholic Church History in Wisconsin](#), [Churches with Historical Markers](#), [Wisconsin Historical Markers](#)

Location: [2171-2265 Riverside Drive, Allouez, WI 54301, USA](#)

No comments:

Post a Comment

Enter your comment...

Comment as: [Unknown \(Go\)](#)

Notify me

[Newer Post](#)

[Home](#)

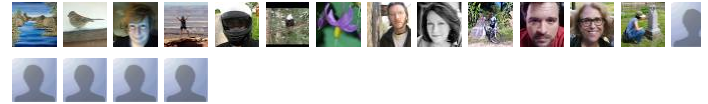
[Older Post](#)

Stat Counter

00510122 [View My Stats](#)

Followers

Followers (18)



Awesome Inc. theme. Theme images by [enjoynz](#). Powered by [Blogger](#).

Search for posts by label:

[Wisconsin Veterans Memorials \(1314\)](#) [Wisconsin Historical Society "Official" Markers \(563\)](#) [National Register Historic Places in Wisconsin \(509\)](#) [Wisconsin Native American History \(166\)](#) [Wisconsin World War II Memorial \(162\)](#) [American Legion Wisconsin Veterans Memorials \(159\)](#) [Museums in Wisconsin \(130\)](#) [Marker Photo Needed \(116\)](#) [Wisconsin Registered Landmark \(110\)](#) [Wisconsin Outdoor Murals \(101\)](#) [Wisconsin Veterans Memorial Artillery \(97\)](#) [Smokey the Bear \(91\)](#) [Waukesha County Wisconsin Veterans Memorials \(85\)](#) [Dane County | Madison Landmarks Commission \(84\)](#) [Wisconsin Cemeteries with Historical Markers \(81\)](#) [Wisconsin Veterans Memorials by County \(78\)](#) [Wisconsin Vietnam War Memorial \(75\)](#) [National Historic Landmarks in Wisconsin \(74\)](#) [VFW Veterans Memorial \(73\)](#) [Wisconsin's whimsical roadside attractions \(71\)](#) [Green Bay Packers \(65\)](#) [Manitowoc County Wisconsin Veterans Memorials \(65\)](#) [Wisconsin World War I Memorial \(64\)](#) [Churches with Historical Markers \(62\)](#) [Wisconsin Railroad History \(60\)](#) [Wisconsin Statues \(58\)](#) [Chippewa County Historical Society Markers \(57\)](#) [Outagamie County Wisconsin Veterans Memorials \(56\)](#) [miscellaneous shots \(52\)](#) [Wisconsin's Maritime Trails Markers \(51\)](#) [Lighthouses Wisconsin \(50\)](#) [Racine County Wisconsin Veterans Memorials \(49\)](#) [Wisconsin Medal of Honor Recipient \(49\)](#) [Wisconsin Korean War Memorial \(47\)](#) [City of Eau Claire Historic Building \(45\)](#) [Wisconsin in World War I \(45\)](#) [New York connection \(45\)](#) [Effigy Mounds in Wisconsin \(40\)](#) [Wood County Wisconsin Veterans Memorials \(39\)](#) [Wisconsin in World War II \(38\)](#) [Wisconsin State Register of Historic Places \(37\)](#) [Price County Wisconsin Veterans Memorials \(36\)](#) [Fond du Lac County Wisconsin Veterans Memorials \(35\)](#) [Ozaukee County Wisconsin Veterans Memorials \(35\)](#) [Jefferson County Wisconsin Veterans Memorials \(34\)](#) [Washington County \(Wisconsin\) Landmarks Commission \(33\)](#) [City Sheboygan \(32\)](#) [Columbia County Wisconsin Veterans Memorials \(32\)](#) [Waupaca County Wisconsin Veterans Memorials \(31\)](#) [Wisconsin Ice Age National Scenic Trail \(30\)](#) [Calumet County Wisconsin Veterans Memorials \(30\)](#) [Chippewa County Wisconsin Veterans Memorials \(30\)](#) [Clark County Wisconsin Veterans Memorials \(30\)](#) [Rock County Wisconsin Veterans Memorials \(30\)](#) [Wisconsin Statues with Markers \(30\)](#) [Iron County Heritage Area \(28\)](#) [U.S. 32nd Infantry Red Arrow Division \(28\)](#) [UW Madison Marker Series \(28\)](#) [City of Omro Historical Tour \(27\)](#) [Dodge County Wisconsin Veterans Memorials \(27\)](#) [Governors of Wisconsin \(27\)](#) [Juneau County Wisconsin Veterans Memorials \(27\)](#) [One Nation Walk of Legends \(27\)](#) [Trempealeau County Wisconsin Veterans Memorial \(27\)](#) [Wisconsin Historical Societies \(27\)](#) [Jackson County Wisconsin Veterans Memorials \(25\)](#) [Kenosha County Wisconsin Veterans Memorials \(25\)](#) [The Peshtigo Fire / The Great Fire of 1871 \(24\)](#) [Wisconsin 9/11 Memorials \(23\)](#) [Door County Maritime Museum \(22\)](#) [Wisconsin County Courthouses \(22\)](#) [Wisconsin Pulp and Paper History \(22\)](#) [Wisconsin Spanish-American War Veterans Memorials \(22\)](#) [Grant County Wisconsin Veterans Memorials \(21\)](#) [National Railroad Museum \(21\)](#) [Green Lake County Wisconsin Veterans Memorials \(20\)](#) [Kelly Meredith Murals \(20\)](#) [M60A3 tank \(20\)](#) [Marathon County Wisconsin Veterans Memorials \(20\)](#) [Marinette County Wisconsin Veterans Memorials \(20\)](#) [Chief Waubeka Historical Trail \(19\)](#) [Eau Claire Historic Building \(19\)](#) [Sheboygan County Wisconsin Veterans Memorials \(19\)](#) [Wisconsin Baseball History \(19\)](#) [Wisconsin Pioneer Schoolhouses \(19\)](#) [Wisconsin Train Depots \(19\)](#) [Civilian Conservation Corps Wisconsin \(18\)](#) [Tribal Heritage Crossing \(18\)](#) [Wisconsin Native American Veterans Memorial \(18\)](#) [Door County Maritime History \(17\)](#) [Eau Claire Landmarks Commission \(17\)](#) [Wisconsin Veterans Memorial Highway \(17\)](#) [Barron County Wisconsin Historical Markers \(16\)](#) [Door County Wisconsin Veterans Memorials \(16\)](#) [Dwight D. Eisenhower No. 60008 \(16\)](#) [Peninsula State Park \(16\)](#) [Village of Thiensville Historic Buildings \(16\)](#) [Black History in Wisconsin \(15\)](#) [Clarence Addison Shaler \(15\)](#) [Deland Park Walking Tour \(15\)](#) [Historic Plymouth Walking Tour \(15\)](#) [Langlade County Wisconsin Veterans Memorial \(15\)](#) [Neenah Legacy Park \(15\)](#) [Old Abe the War Eagle \(15\)](#) [Pincrest Historical Village \(15\)](#) [Washington County Wisconsin Veterans Memorials \(15\)](#) [Wisconsin Soo Line \(15\)](#) [Father Jacques Marquette \(1637-1675\) in Wisconsin \(14\)](#) [Pioneer Cemeteries in Wisconsin \(14\)](#) [S. County Wisconsin Veterans Memorials \(14\)](#) [wisconsin geographical markers \(14\)](#) [Boy Scouts of America Eagle Scout Project \(13\)](#) [Chippewa Falls Irvine Park \(13\)](#) [Eau Claire Baseball Hall of Fame \(13\)](#) [Harrington Beach State Park \(13\)](#) [Marquette County Wisconsin Veterans Memorials \(13\)](#) [Shawano County Wisconsin Veterans Memorials \(13\)](#) [Belgian Heritage History in Wisconsin \(12\)](#) [City of Plymouth Landmark \(12\)](#) [Devil's Lake State Park \(12\)](#) [Douglas County Wisconsin Veterans Memorials \(12\)](#) [missing marker \(12\)](#) [Archaeology and History of the Wisconsin 57 Transportation Corridor \(12\)](#) [Art in Public Places in Wisconsin \(11\)](#) [Ashland County Wisconsin Veterans Memorials \(11\)](#) [Col. John Hicks \(11\)](#) [Crawford County Wisconsin Veterans Memorials \(11\)](#) [Door County Wisconsin Lighthouses \(11\)](#) [Monroe County Wisconsin Veterans Memorials \(11\)](#) [West Allis Historical Society Museum \(11\)](#) [Wisconsin's Mining History \(11\)](#) [Blue Star Memorial Highway Wisconsin \(10\)](#) [Circuit Court Building \(10\)](#)

World Baraboo State Historic Site (10) Cobra helicopters in Wisconsin (10) Forest County Wisconsin Veterans Memorials (10) Haunted Wisconsin (10) Historic Home Museums in Wisconsin (Mazomanie Downtown Historic District (10) Polk County Wisconsin Veterans Memorials (10) Portage County Wisconsin Veterans Memorials (10) Rib Mountain State Park (10) Southern Wisconsin Veterans Memorial Cemetery (10) Wisconsin Circus History (10) Wisconsin Historic Military Roads (10) Hartman Creek State Park (9) Iron County Wisconsin Veterans Memorials (9) It Originated in Wisconsin! (9) New Berlin Historical Society (9) Norwegian Pioneer Settlers in Wisconsin (9) Old Falls Village Historical Park & Museum (9) Vilas County Wisconsin Veterans Memorials (9) Walworth County Wisconsin Veterans Memorials (9) War in Iraq Memorial (9) Wisconsin Register of Historic Places (9) American Gold Star Mothers Wisconsin (8) Carnegie Libraries in Wisconsin (8) Fat Claude Allouez (1622-1689) in Wisconsin (8) Military aircraft public displays in Wisconsin (8) The Wind Point Lighthouse (8) Town of Wabeno Wisconsin (8) Underground Railroad in Wisconsin Vernon County Wisconsin Veterans Memorials (8) Wisconsin Veterans Memorial Aircraft (8) Wisconsin Women Historical Markers (8) Arvid E. Miller Stockbridge Munsee Historical Library Muse (7) Buffalo County Wisconsin Veterans Memorials (7) Green County Wisconsin Veterans Memorials (7) Heritage Hill State Historic Park (7) John Muir in Wisconsin (7) Lincoln County Wisconsin Veterans Memorials (7) Medal of Honor Recipient Mitchell Red Cloud Jr. (7) Military Roads of Wisconsin (7) My Articles (7) New Berlin City Landmark (7) Oconto County Wisconsin Veterans Memorials (7) Oneida County Wisconsin Veterans Memorials (7) Richland County Wisconsin Veterans Memorials (7) The Yellowstone Trail in Wisconsin (7) Waushara County Wisconsin Veterans Memorials (7) Wisconsin Fireman's Memorial (7) Wisconsin Yellowstone Trail (7) Wood National Cemetery (7) Dunn County Wisconsin Veterans Memorials (6) Iowa County Wisconsin Veterans Memorials (6) La Crosse County Wisconsin Veterans Memorials (6) Lafayette County Wisconsin Veterans Memorials (6) Lighthouses of Lake Winnebago Wisconsin (6) Natural National Landmark Wisconsin (6) Spirit of the American Doughboy (6) Adams County Wisconsin Veterans Memorials (5) Green Bay City Stadium (5) Neenah Historical Tour (5) Octagon Houses in Wisconsin (5) Croix County Wisconsin Veterans Memorials (5) Tower Hill State Park (5) U.S.S. Maine Memorials (5) American Society of Mechanical Engineers (4) Bayfield County Wisconsin Veterans Memorials (4) Eau Claire County Wisconsin Veterans Memorials (4) James Duane Doty (4) Kewaunee County Courthouse (4) Menominee County Wisconsin Veterans Memorials (4) Pierce County Wisconsin Veterans Memorials (4) Purple Heart Recipients in Wisconsin (4) War in Afghanistan (4) War of 1812 (4) Wisconsin Liberty Tree Memorials (4) Wisconsin Veterans Memorial Bridge (4) Belgian Roadside Chapels in Wisconsin (3) Burnett County Wisconsin Veterans Memorials (3) Frank E. Noyes (3) Great Lakes Shipwrecks of Wisconsin (3) Jewish History in Wisconsin (3) John Bergstrom Statues (3) Oneida Holy Apostles Cemetery (3) Pepin County Wisconsin Veterans Memorials (3) Rusk County Wisconsin Veterans Memorials (3) Wisconsin Purple Heart Recipient (3) Wisconsin Veterans Museum (3) DAV Wisconsin Veterans Memorials (2) Milwaukee Landmark Commission (2) Sawyer County Wisconsin Veterans Memorials (2) Wisconsin Pioneer Village (2) Michigan lighthouses (2) Kilbuck Landmark (1) NEON Wisconsin (1) Oneida Tribe of Indians of Wisconsin (1) Operation Enduring Freedom (1) VVA Veterans Memorial (1) Wisconsin Hamburger Joints (1) Michigan historical markers (1) operation during storm (1)